

ARRIGO MUPD REPLAT

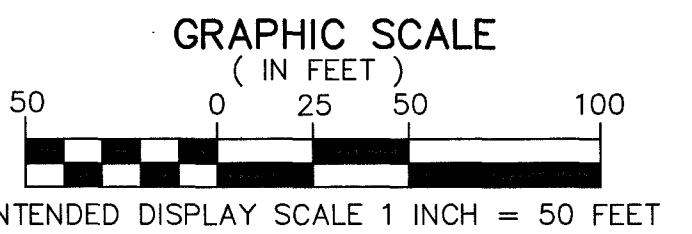
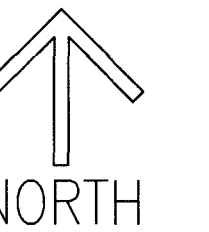
BEING A REPLAT OF ARRIGO M.U.P.D., ACCORDING TO THE PLAT THEREOF, AS RECORDED IN PLAT BOOK 126, PAGES 167 THROUGH 169 AND THE NORTH 15 FEET OF THE 30 FOOT STRIP LYING SOUTH OF AND ADJACENT TO THE EAST 1/2 OF THE WEST 1/2 OF TRACT 1, BLOCK 4, THE PALM BEACH FARMS CO. PLAT NO. 3, ACCORDING TO THE PLAT THEREOF, AS RECORDED IN PLAT BOOK 2, PAGES 45 THROUGH 54 ALL OF THE PUBLIC RECORDS OF PALM BEACH COUNTY, FLORIDA AND LYING IN SECTION 27, TOWNSHIP 43 SOUTH, RANGE 42 EAST, PALM BEACH COUNTY, FLORIDA

THIS INSTRUMENT PREPARED BY
DAVID P. LINDLEY
OF

CAULFIELD & WHEELER, INC.
SURVEYORS - ENGINEERS - PLANNERS
7900 GLADES ROAD, SUITE 100
BOCA RATON, FLORIDA 33434 - (561)392-1991
CERTIFICATE OF AUTHORIZATION NO. LB3591

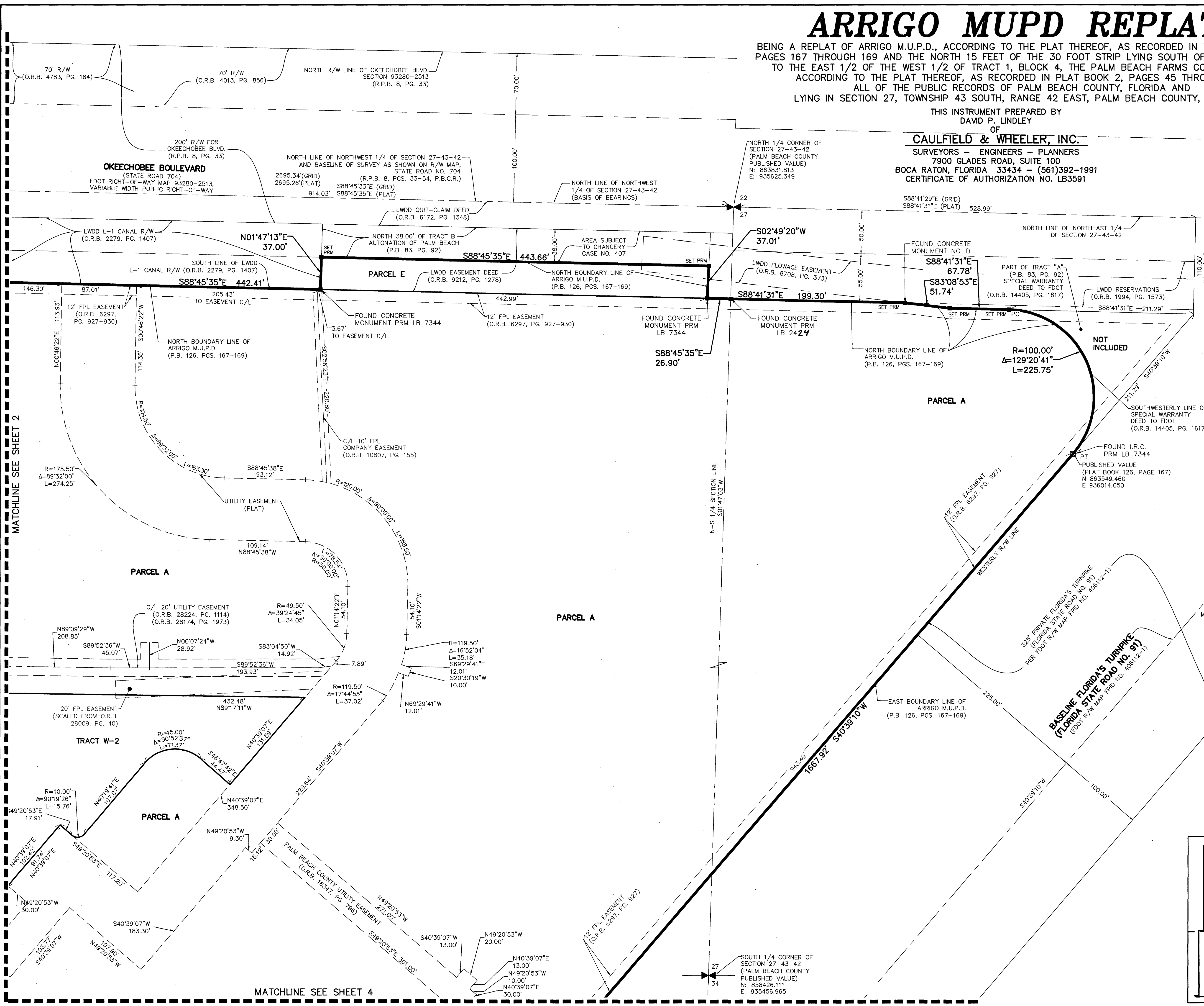
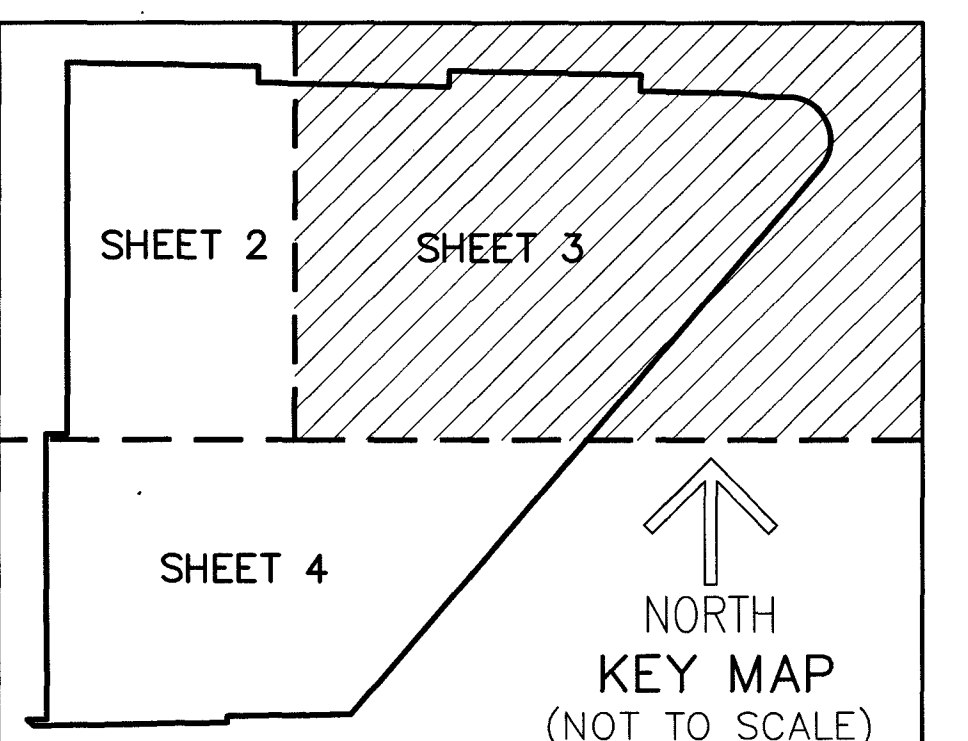
81

SHEET 3 OF 4



NOTES
COORDINATES, BEARINGS AND DISTANCES
COORDINATES SHOWN ARE GRID
DATUM = NAD 83 (90 ADJUSTMENT)
ZONE = FLORIDA EAST
LINEAR UNIT = US SURVEY FEET
COORDINATE SYSTEM 1983 STATE PLANE
TRANSVERSE MERCATOR PROJECTION
ALL DISTANCES ARE GROUND, UNLESS OTHERWISE NOTED
SCALE FACTOR = 1.000031401
GROUND DISTANCE X SCALE FACTOR = GRID DISTANCE
BEARINGS AS SHOWN HEREON ARE PLAT DATUM
ROTATION TO GRID NAD 83 (90 ADJUSTMENT), FLORIDA
EAST ZONE IS 00°00'02" (CLOCKWISE)
NORTH LINE OF NORTHWEST 1/4 OF SECTION 27, TOWNSHIP 43 SOUTH, RANGE 42 EAST S88°45'35"E PLAT S88°45'33"E GRID

LEGEND/ABBREVIATIONS:
C/L - CENTERLINE
Δ - DELTA (CENTRAL ANGLE)
CB - CHORD BEARING
CD - CHORD DISTANCE
DE - DRAINAGE EASEMENT
E - EASTING (WHEN USED WITH COORDINATES)
FDOT - FLORIDA DEPARTMENT OF TRANSPORTATION
L - ARC LENGTH
LAE - LIMITED ACCESS EASEMENT
LBE - LANDSCAPE BUFFER EASEMENT
P.B. - PLAT BOOK
PG. - PAGE
LME - LAKE MAINTENANCE EASEMENT
LWDD - LAKE WORTH DRAINAGE DISTRICT
M.U.P.D. OR MUPD - MIXED USE PLANNED DEVELOPMENT
N - NORTHING (WHEN USED WITH COORDINATES)
O.R.B. - OFFICIAL RECORD BOOK
PBCUE - PALM BEACH COUNTY UTILITY EASEMENT
PC - POINT OF CURVATURE
PI - POINT OF INTERSECTION
PT - POINT OF TANGENCY
PNT - POINT OF NON-TANGENCY
R - RADIUS
R/W - RIGHT-OF-WAY
UE - UTILITY EASEMENT
PRM ■ - DENOTES SET PERMANENT REFERENCE MONUMENT
4" X 4" X 24" CONCRETE MONUMENT WITH ALUMINUM DISK STAMPED "C&W PRM LB3591" UNLESS OTHERWISE NOTED
● - DENOTES SET IRON ROD AND CAP STAMPED LB3591
SND ● - DENOTES SET NAIL AND DISK STAMPED "C&W PRM LB3591"
▲ - DENOTES SET PERMANENT REFERENCE MONUMENT NAIL AND DISK STAMPED "PRM LB3591"
(PLAT) - ARRIGO M.U.P.D., ACCORDING TO THE PLAT THEREOF AS RECORDED IN PLAT BOOK 126, PAGES 167, 168, AND 169 OF THE PUBLIC RECORDS OF PALM BEACH COUNTY, FLORIDA.



MATCHLINE SEE SHEET 2

MATCHLINE SEE SHEET 4